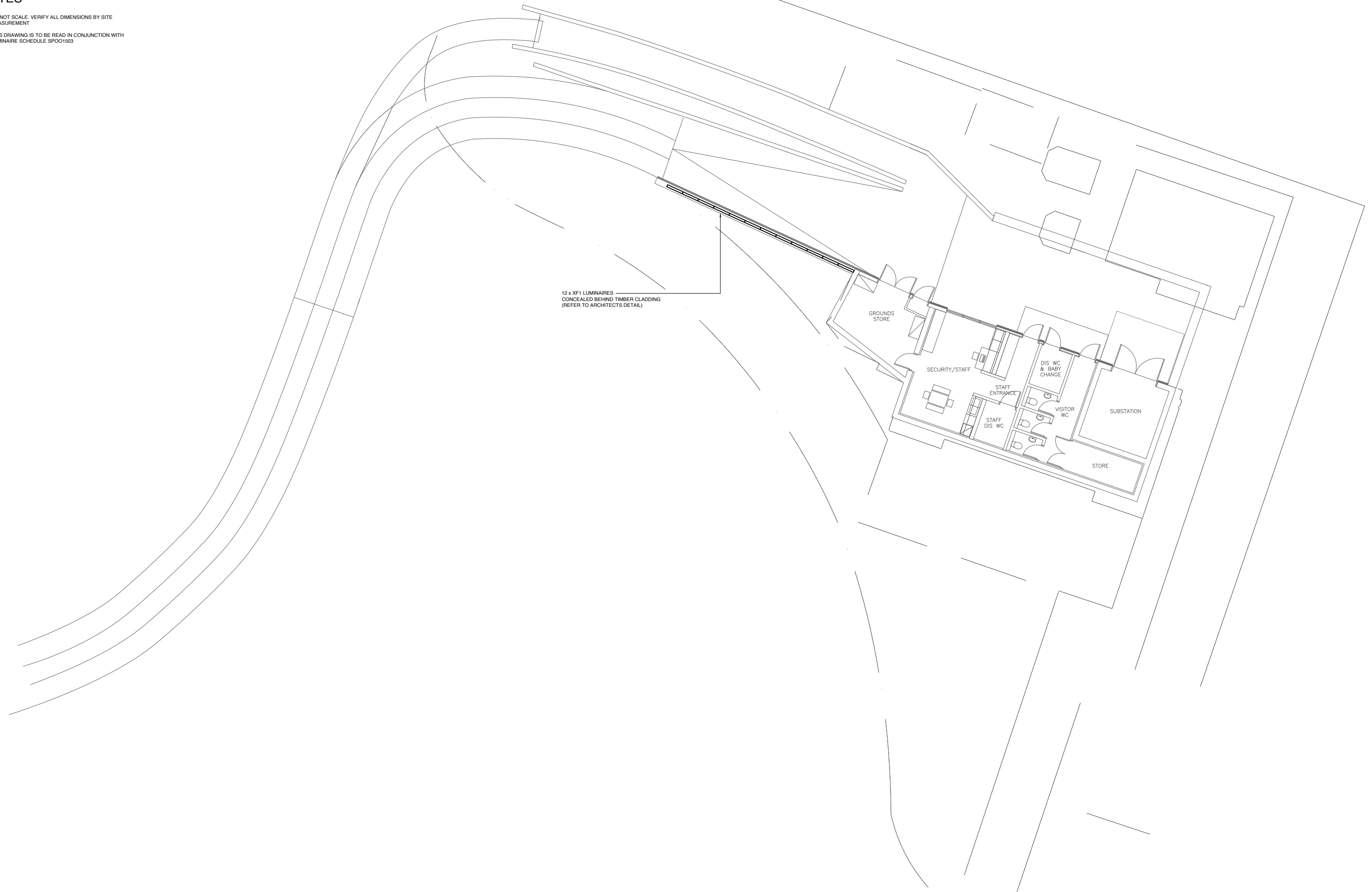


NOTES

- 1. DO NOT SCALE. VERIFY ALL DIMENSIONS BY SITE MEASUREMENT
- 2. THIS DRAWING IS TO BE READ IN CONJUNCTION WITH LUMINAIRE SCHEDULE SPO01503

12 x XF1 LUMINAIRES
 CONCEALED BEHIND TIMBER CLADDING
 (REFER TO ARCHITECTS DETAIL)



Rev.	Description	Date	Rev.	Description	Date	Rev.	Description	Date
P01	STAGE E BASEBUILD ISSUE	26.02.10						

V:\uk_p01\123x\12349002\HUB-N-G1.dwg - Feb 26, 2010

NDY QA SYSTEM
 REASON FOR ISSUE
 PRELIMINARY
 AUTHORISATION
 By: **FW : 26 Feb 2010**
 VERIFICATION OF
 LATEST AMENDMENT
 By: **KT : 26 Feb 2010**

NDYLIGHT
 LIGHTING DESIGN
 3RD FLOOR, CLASSIC HOUSE, 180 OLD STREET
 LONDON EC1V 9RQ, UNITED KINGDOM
 Phone: +44 207 553 9494 Fax: +44 207 553 9499
 Web: www.ndylight.com
This drawing is diagrammatic and shows the general arrangement of equipment. Any information involving measurement of the works shall be taken from architectural and structural drawings, workshop drawings by others and conditions at the site. The works shall comply with the contract conditions and Statutory Regulations.

Project: **STONEHENGE ENVIRONMENTAL IMPROVEMENTS PROJECT**
 Title: **SPECIALIST LIGHTING SERVICES HUB BUILDING EXTERNAL LIGHTING LAYOUT**
 Scale: 1:100 @ A1 Date: FEB 2010 Drawn: DB Designed: KT Project No: U12349-002N

Set Of
 Cad No.
P01
 Drawing No.
HUB-N-G1